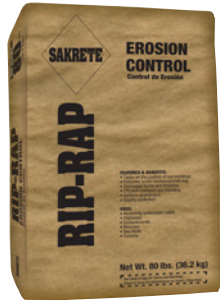




RIP-RAP (SCRIM)

◆ The Pro's Choice Since 1936



Sakrete® Rip-Rap Scrim is a sand and cement mixture packaged in a polyester scrim reinforced kraft bag designed for erosion control.

Features:

- Takes on the contour of the surroundings for better bag interlocking and erosion control
- Polyester Scrim Reinforced Biodegradable bag
- Eliminates Forms and Finishing
- Efficient Transport and Handling into hard to access areas
- Attractive and uniform appearance

Use For:

- Embankments
- Beaches
- Sea Walls
- Culverts
- Anchoring Underwater Cable and similar devices

Coverage/Yield:

Bag size - 21" length x 13" wide x 5" thick

Bag Size	Yield	Diameter of Pipe	Square Feet
80 lb (36.3 kg)	0.75 ft ³ (.02 m ³)	2'	3.1
80 lb (36.3 kg)	0.75 ft ³ (.02 m ³)	3'	7.1
80 lb (36.3 kg)	0.75 ft ³ (.02 m ³)	4'	12.6
80 lb (36.3 kg)	0.75 ft ³ (.02 m ³)	5'	19.6
80 lb (36.3 kg)	0.75 ft ³ (.02 m ³)	6'	28.3
80 lb (36.3 kg)	0.75 ft ³ (.02 m ³)	8'	50.2
80 lb (36.3 kg)	0.75 ft ³ (.02 m ³)	10'	78.5

To Determine Coverage:

For A Vertical Wall

Place one bag on top of another, and end to end. Multiply the wall area by 1.40. As an example if the area to cover is 5' x 20' or 100 square feet, then multiply 100 by 1.40 to get 140 bags. This gives a complete wall 5' x 20' x 13" thick. To deduct area of drain pipes through the wall, multiply square of diameter by .785. Example: 4 foot diameter drain pipe 4' x 4' x .785 equals 12.56 ft².

For Sloped Area:

With bags placed side by side and end to end, multiply the area by .53. Example: If the area to cover is 30' x 30' or 900 square feet, multiply 900 by .53 to get 477 bags.



Preparation:

1. The foundation on which the bottom layer of Rip Rap is placed should be solid and relatively stable.
2. Remove grass or other materials and bring the base to an even and compacted grade that is capable of supporting the number of Rip Rap bags needed for a wall construction.

Wall Placement:

1. Bags should be placed in a running bond pattern laying bags end to end.
2. While the material absorbs moisture from the ground and air, wetting the bags after placing is recommended.
3. When additional stability is needed. This can be accomplished by driving pins or steel rods through the bags.

Slope Placement:

1. Place first row of bags end to end on a secure base.
2. Continue rows in a stair step pattern setting each row back from the previous one.
3. While the material absorbs moisture from the ground and air, wetting the bags after placing is recommended.
4. Stabilize the Rip Rap bags on the slope by driving steel rods through the bags.
5. Back fill behind the bags with dirt followed by tamping to assure a solid fill.

Technical Data:

DIVISION 31

Retention Measures for Erosion and Sedimentation Controls – 31 25 34

For best results all materials should be stored between 40°F (4°C) and 80°F (27°C) 24 hours prior to installation.

Curing:

No special curing needed.

Color:

Gray

Precautions:

- Do not use as a structural component
- Do not use for building foundations
- Do not use for structural or free standing walls
- Do not use for chemical containment areas
- Must be stored in a tightly closed container off the floor in a dry place.
- Do not use material or plan a project during freezing temperatures.

NOTE: Proper application and installation of all Sakrete products are the responsibility of the end user.



◆ The Pro's Choice Since 1936

Safety:

READ and UNDERSTAND the Safety Data Sheet (SDS) before using this product.
WARNING: Wear protective clothing and equipment. For emergency information, call CHEMTREC at 800-424-9300 or 703-527-3887 (outside USA).
KEEP OUT OF REACH OF CHILDREN.

Limited Product Warranty:

The manufacturer warrants that this product shall be of merchantable quality when used or applied in accordance with the manufacturer's instructions. This product is not warranted as suitable for any purpose other than the general purpose for which it is intended. This warranty runs for one (1) year from the dates the product is purchased. ANY IMPLIED WARRANTY OF MERCHANTABILITY OR FITNESS FOR A PARTICULAR PURPOSE ON THIS PRODUCT IS LIMITED TO THE DURATION OF THIS WARRANTY. Liability under this warranty is limited to replacement or defective products or, at the manufacturer's option, refund of the purchase price. CONSEQUENTIAL AND INCIDENTAL DAMAGES ARE NOT RECOVERABLE UNDER THIS WARRANTY.